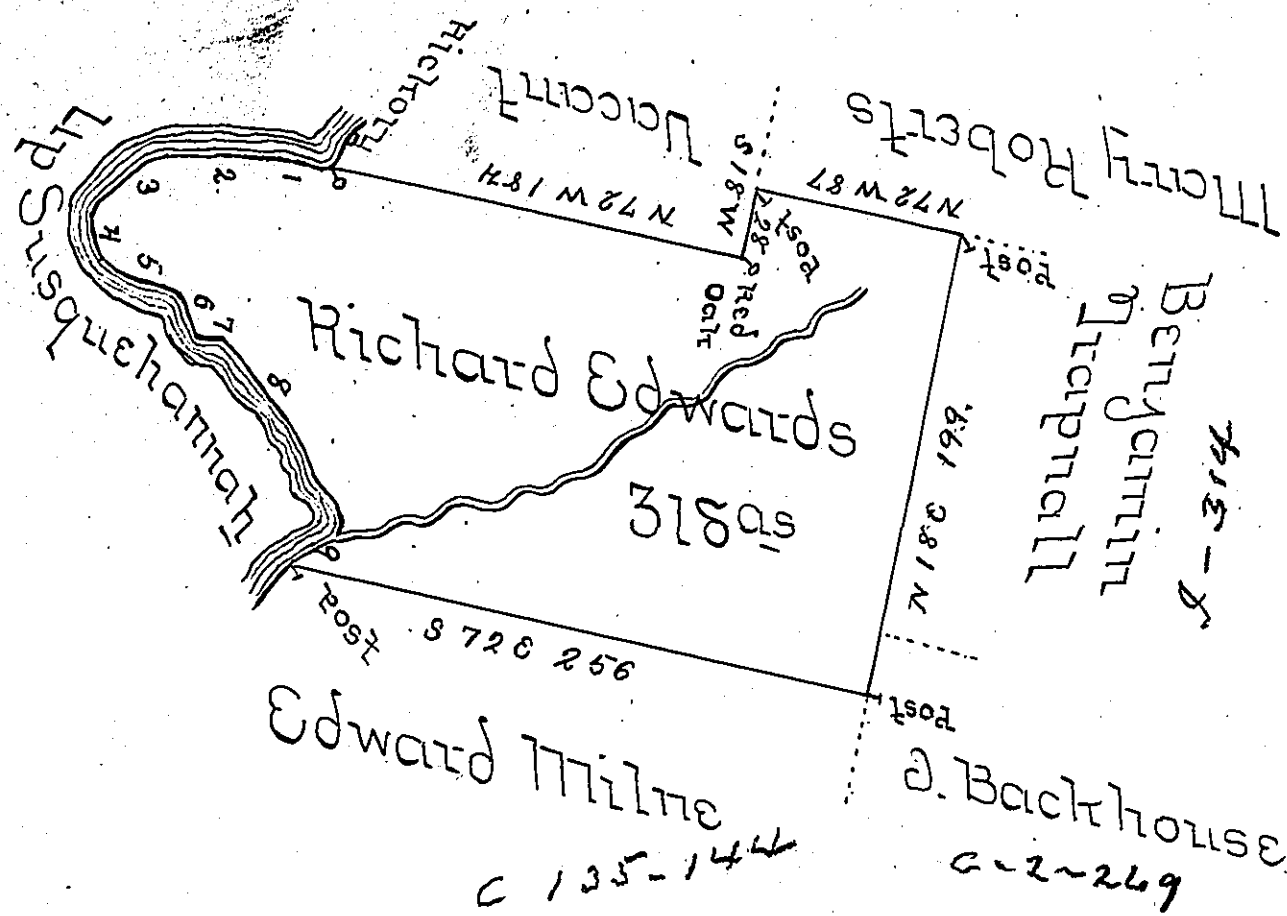


Courses & Distances
up the River

0	N 76 W 27
6	N 82 W 48
7	S 59 W 32
7	S 7 E 22
7	S 57 E 35
7	S 6 E 18
7	S 66 E 10
7	S 25 E 94
7	S 67 W 26
	<u>312</u>



A Draught of a Tract of Land called the Landing Place Situate on the Southernly side of the west Branch of Susquehanna adjoining & Below Land of Edward Milne & others about five Miles below the Canoe Place in the County of Bedford Containing three hundred & eighteen Acres & the usual Allowance of six Percent for Roads &c Surveyed the 3^d Day of November 1775 for Richard Edwards in pursuance of (obl.) Warrant Dated the 3^d Day of August 1773 by

No. John Lukens Esq. / Thomas Smith D.S.
Surveyor General

IN TESTIMONY that the above is a copy of the original remaining on file in the Department of Internal Affairs of Pennsylvania, made conformably to an Act of Assembly approved the 16th day of February, 1833, I have hereunto set my Hand and caused the Seal of said Department to be affixed at Harrisburg, this fourteenth day of September 1904.

Isaac P. Perry
Secretary of Internal Affairs.